

DACAPROOF INSULATED DPC

Uniclass L3272:P7114	EPIC F642:X725
C/SFB (31.9)	Hn6
SEP 2019	

Features

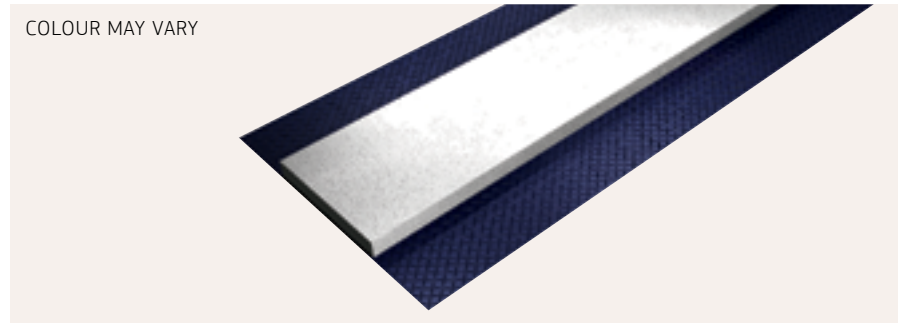
- » Easy to cut on site
- » Economical solution
- » Prevents water penetration
- » Can be installed as brickwork progresses
- » Available in various sizes
- » CFC and HFC free insulation

Standards

- » ISO 9001 Yes
- » BBA Certificate..... No
- » Part L Compliance 2010.... Yes
- » Robust Detail BR262..... No

Sustainability

- » ISO 14001 Yes
- » GWP 0
- » ODP Zero
- » Green Guide A+



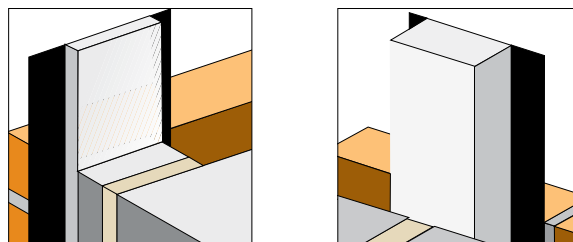
Product Description

Dacaproof provides a single solution for closing off cavities around windows, doors and party walls.

Product Function

Dacaproof is an insulated DPC products that is used when traditional block return construction is employed, helping to prevent heat loss and water penetration around window and door reveals. Easily installed as the brickwork is completed.

Installation/ Application Detail



DACAPROOF INSULATED DPC

Specification

- » Fire Rated No
- » Check Reveal Available No
- » 1st Fix Yes
- » 2nd Fix No
- » Min Cavity Width (mm) Any
- » Max Cavity Width (mm) Any
- » Lengths To client spec
- » Thermal Conductivity (K Value
 λ 90/90) = 0.038 W/mk
- » Thermal Resistance
(R Value) = 0.474 m²K/W

Insulation

- » See table


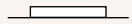



Order Codes

Product + Size
i.e (DP1 165x100x18 mm)

Technical Data

CFC & HCFC free Polyethylene Foam (BS 5628-3:198) slab on a DPC backing Polyethylene (BS 6515:1984). Colour may vary

DACAPROOF

Product	Insulation Size	DPC	Material	Length	
DP-100-10-165	100 x 10mm	165mm	Polyethylene DPC with PE insulation	6 m coil	
DP-100-12-165	100 x 12mm	165mm	Polyethylene DPC with PE insulation	10 m coil	
DP-100-20-165	100 x 20mm	165mm	Polyethylene DPC with PE insulation	6 m coil	
DP-140-10-225	140 x 10mm	225mm	Polyethylene DPC with PE insulation	6 m coil	
DP-140-20-225	140 x 20mm	225mm	Polyethylene DPC with PE insulation	6 m coil	

Recycled Content

The insulation materials used can typically contain a recycled content of approximately 5%. Colour may vary.



Health & Safety

Dacatie has an approved Health and Safety Policy and is committed to working and supplying products safely. A Dacatie COSHH data sheet is available and can be downloaded from the Dacatie website www.dacatie.co.uk.

Environment

Dacatie's closer insulation has no CFC's, HCFC's in the manufacturing process and represents no known threat to the environment. Dacatie's closer insulation has a low impact on the environment and is classified as zero ODP and zero GWP.

Storage & Packaging

Dacatie's closers are supplied in polythene sleeves that are designed for transporting and protecting the products. It is not recommended that the packs are stored in direct sunlight. When storing the Cavity Closers for longer periods of time it is recommended the product should be stored indoors, or under cover.

D-0009/#01/2019-07

GWP levels less than 5, ODP Zero and Green Guide A+

Dacatie Insulated Cavity Closers offer different insulation materials with the option of GWP levels of <5, ODP levels of zero and Green Guide ratings of A+.

BREEAM (and Code for Sustainable Homes)

BREEAM®

BRE has advised that Insulated Cavity Closers as a product do not gain Green Guide credits, since they do not enhance BREEAM scheme categories.

Building Regulations compliance

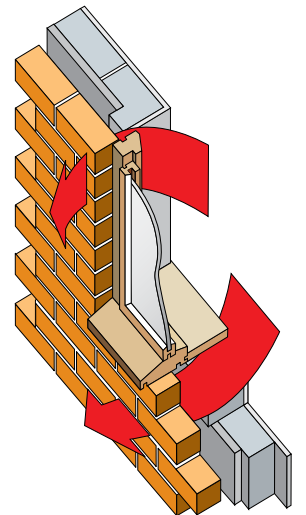
Building Regulation (Part L) compliance is important. The path of minimum thermal resistance through the closer must be at least 0.45 m²K/W, which Dacatie closers exceed, as stipulated in robust details "limited thermal bridging and air leakage" when the window is installed with a minimum set back of 30 mm.



Cold Bridging

The problems of cold bridging are recognised in the Part L Building Regulation 2010 and Scottish Building Regulations 2004. Dacatie Insulated Cavity Closers are used to overcome thermal loss that occurs around unprotected cavities and reveals. Thermal loss can result in problems of condensation, staining and mould growth at the reveals of these openings.

Prolonged exposure to such factors will lead to a deterioration of the internal plaster and paint work. The use of Dacatie Cavity Closers will help to prevent the occurrence of such factors.



Specification Statement

The insulated cavity closer around window and door openings is to be a Dacatie product, supplied by Quantum Profile Systems Ltd, Salmon Fields, Royton, Oldham, OL2 6JG and installed in accordance with the manufacturer's recommendations.