

FF4/5000 FRAME FORMER

Uniclass L3272:P7114	EPIC F642:X725
C/SFB (31.9)	Hn6

SEP 2019

Features

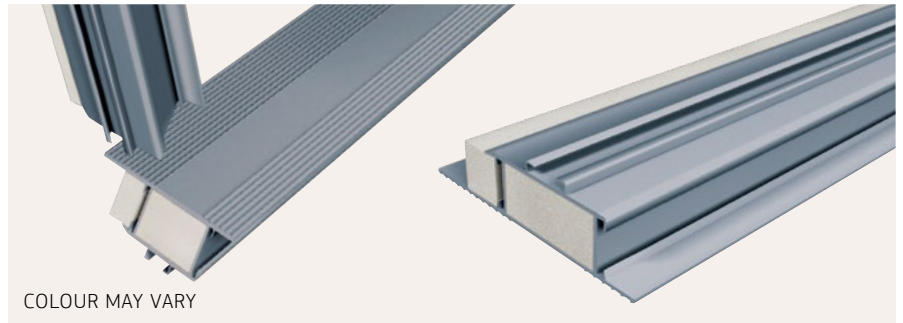
- » Suitable for a wide range of cavity widths from 75–160 mm.
- » Weather Rating
Standard/ Flush = Severe
Check Reveal = Very Severe
- » Reduces risk of condensation, mould and moisture migration across the cavity
- » Complies with Part L Building Regulations when the window is installed with a minimum set back of 30 mm
- » Can be used on timber frame construction

Standards

- » ISO 9001 Yes
- » BBA Certificate..... Yes
- » Part L Compliance 2010.... Yes
- » Robust Detail BR262..... Yes

Sustainability

- » ISO 14001 Yes
- » GWP 0
- » ODP..... Zero
- » Green Guide A+



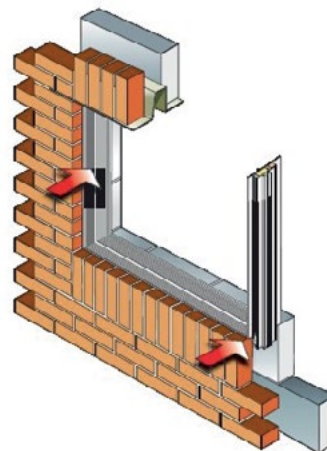
Product Description

Dacatie FF4/5000 Frame Formers are suitable for use with all window and door frames, including timber, PVCu and aluminium. Available in two profiles FF4000 for cavity widths 75–110 mm and FF5000 (for internal fixing) for cavity widths 110–160 mm.

Product Function

FF4/5000 consists of a rigid PVCu profile containing EPS insulation forming a continuous insulated cavity closer around door and window openings, preventing cold bridging.

A fully insulated cavity closer made up into sturdy factory built frame former, saves time by eliminating the need for site fabricated timber templates around window and door reveals.



FF4/5000 FRAME FORMER

Specification

- » Fire Rated No
- » Check Reveal Available Yes
- » 1st Fix Yes
- » 2nd Fix No
- » Min Cavity Width (mm) 75
- » Max Cavity Width (mm) 160
- » Lengths To client spec
- » Thermal Conductivity (K Value
 λ 90/90) = 0.038 W/mK
- » Thermal Resistance (R Value)
= 0.658 m²K/W

Technical Data

PROFILE:

Non water absorbing rigid PVCu extruded profile (colour may vary).

INSULATION:

EPS insulation, HCFC and CFC free (colour may vary).

Recycled Content

All Dacatie Cavity Closers are produced with a recycled content of approximately 50%. The materials used predominately comprise a blend of post-consumer and/or post-industrial recycled material.

The insulation materials used can typically contain a recycled content of approximately 5%. Colour may vary.



FF4/5000 FRAME FORMER

Order Codes

STANDARD:

FF4000 + cavity width
FF5000 + cavity width

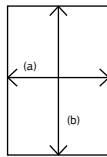
CHECK REVEAL:

CFF4000 + cavity width
CFF5000 + cavity width

How To Order

For Dacatie Frame Formers, the following information should be supplied:

1. Overall width (a)
(brick to brick) (mm)
2. Overall height (b)
(brick to lintel) (mm)
3. Cavity width (mm)
4. Three or four sided former3/4
5. Plaster stop required?
(30 mm offset)..... yes/no
6. Check reveal yes/no



Fixing Ties

DTS Fixing Ties for Protherm construction (DTS Fixing Tie)

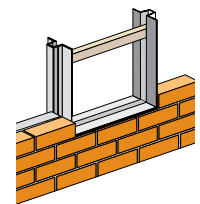
- » Thickness: 0.6 mm
- » Material: Steel
- » No / Pack: 100

Application/ Fixing Details

Dacatie Frame Formers are suitable for use with all window and door frames, including timber, PVCu and aluminium. For easy installation follow these steps.

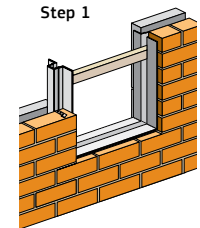
STEP 1

Build wall up to sill height and locate the Dacatie Frame Former in the cavity (check former is square and propped up vertically).



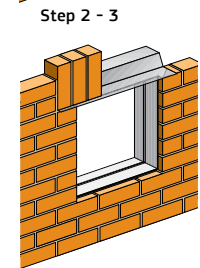
STEP 2

Build up courses of brickwork/blockwork inserting brick ties alternately between the brick and the block every 225 mm (every three bricks or every course of block work).



STEP 3

Brick up to lintel height and remove bracing (if applicable).



STEP 4

Build in lintel and upper brickwork.

NOTES FOR WINDOW & DOOR INSTALLATION

- » It is the responsibility of the contractor to ensure frames are supplied as ordered before installation, as no responsibility for any incorrect dimensions can be considered after the frame former has been built into the brickwork.
- » When ordering for timber frame constructions, please contact our technical department.
- » Check window or door is within tolerances; windows should be 10mm less than inside width of former and 8mm less than the inside height of former. Fix with standard window fixings (e.g. lugs, reveal straps or bolt fixings).
- » Non standard shapes available
- » Frame Formers can be manufactured with welded corners or using corner brackets. Contact us for further details on +44 (0) 161 627 4222.

Health & Safety

Dacatie has an approved Health and Safety Policy and is committed to working and supplying products safely. A Dacatie COSHH data sheet is available and can be downloaded from the Dacatie website www.dacatie.co.uk.

Environment

Dacatie's closer insulation has no CFC's, HCFC's in the manufacturing process and represents no known threat to the environment. Dacatie's closer insulation has a low impact on the environment and is classified as zero ODP and zero GWP.

Storage & Packaging

Dacatie's closers are supplied in polythene sleeves that are designed for transporting and protecting the products. It is not recommended that the packs are stored in direct sunlight. When storing the Cavity Closers for longer periods of time it is recommended the product should be stored indoors, or under cover.

GWP levels less than 5, ODP Zero and Green Guide A+

Dacatie Insulated Cavity Closers offer different insulation materials with the option of GWP levels of <5, ODP levels of zero and Green Guide ratings of A+.

BREEAM (and Code for Sustainable Homes)

BREEAM®

BRE has advised that Insulated Cavity Closers as a product do not gain Green Guide credits, since they do not enhance BREEAM scheme categories.

Building Regulations compliance

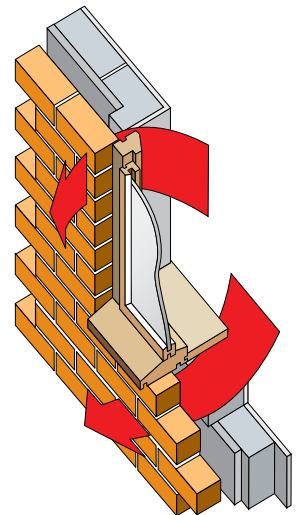
Building Regulation (Part L) compliance is important. The path of minimum thermal resistance through the closer must be at least 0.45 m²K/W, which Dacatie closers exceed, as stipulated in robust details "limited thermal bridging and air leakage" when the window is installed with a minimum set back of 30 mm.



Cold Bridging

The problems of cold bridging are recognised in the Part L Building Regulation 2010 and Scottish Building Regulations 2004. Dacatie Insulated Cavity Closers are used to overcome thermal loss that occurs around unprotected cavities and reveals. Thermal loss can result in problems of condensation, staining and mould growth at the reveals of these openings.

Prolonged exposure to such factors will lead to a deterioration of the internal plaster and paint work. The use of Dacatie Cavity Closers will help to prevent the occurrence of such factors.



Specification Statement

The insulated cavity closer around window and door openings is to be a Dacatie product, supplied by Quantum Profile Systems Ltd, Salmon Fields, Royton, Oldham, OL2 6JG and installed in accordance with the manufacturer's recommendations.