

DACAPROOF / DACABLOCK FIRE RATED

Uniclass L3272:P7114	EPIC F642:X725
C/SFB (31.9)	Hn6

FEB 2016

Features

- » Easy to cut on site
- » Economical solution
- » Prevents water penetration
- » Can be installed as brickwork progresses
- » Available in various sizes
- » CFC and HFC free insulation
- » DACABLOCK provides 60mins fire integrity

Standards

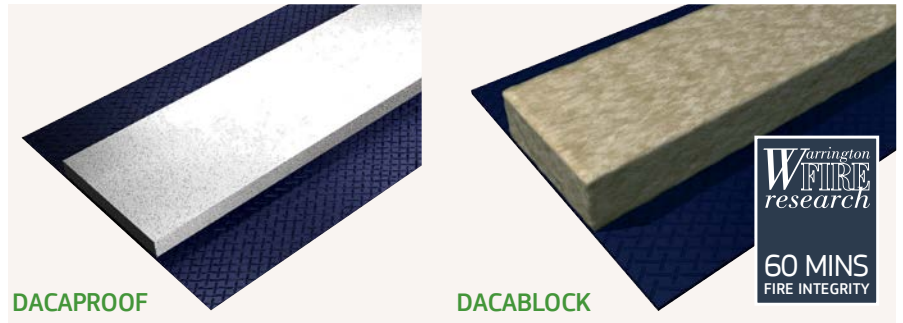
- » ISO 9001:2008 Yes
- » BBA Certificate..... No
- » Part L Compliance 2010 Yes
- » Robust Detail BR262 No

CORE MINERAL WOOL:

- » Manufactured in accordance with BS EN 13162 Yes

Sustainability

- » ISO14001: 2008 Yes
- » GWP 0
- » ODP..... Zero
- » Green Guide A+



Product Description

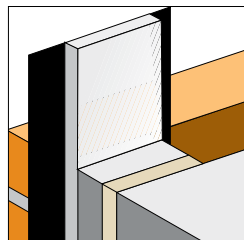
Dacaproof and Dacablock provides a single solution for closing off cavities around windows, doors and party walls.

Product Function

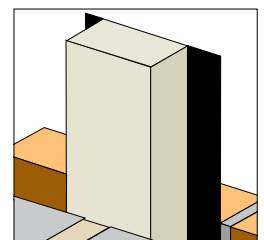
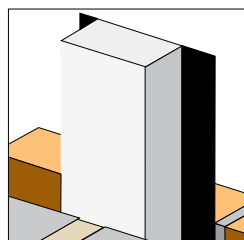
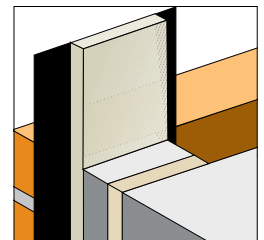
Dacaproof and Dacablock are insulated DPC products that are used when traditional block return construction is employed, helping to prevent heat loss and water penetration around window and door reveals. Easily installed as the brickwork is completed. Dacablock is manufactured with mineral wool has a 60 minute fire integrity rating.

Installation/ Application Detail

DACAPROOF
DP1 - 4



DACABLOCK
DB5 - 6



DACAPROOF / DACABLOCK FIRE RATED

Specification

- » Fire Rated Yes (Dacablock only)
- » Check Reveal Available No
- » 1st Fix Yes
- » 2nd Fix No
- » Min Cavity Width (mm) Any
- » Max Cavity Width (mm) Any
- » Lengths To client spec
- » Thermal Conductivity (K Value Ψ 90/ 90) = See table
- » Thermal Resistance (R Value) = See table

Insulation


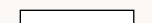


- » See table

Order Codes


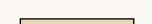
Product + Size
i.e (DP1 165x100x18mm)

Technical Data

DACAPROOF

Product	Size	Material	Length	No/Pack	
DP1	165 x 100 x 18mm	Polyethylene DPC with EPS insulation	2.5m	10	
DP2	225 x 150 x 18mm	Polyethylene DPC with EPS insulation	2.5m	10	
DP3	165 x 100 x 12mm	Polyethylene DPC with PE insulation	10m coil	5	
DP4	225 x 150 x 12mm	Polyethylene DPC with PE insulation	10m coil	5	

DACABLOCK

Product	Size	Material	Length	No/Pack	
DB5 Fire Rated	165 x 100 x 25mm	Polyethylene DPC with Mineral Wool insulation	1.2m	10	
DB6 Fire Rated	225 x 150 x 25mm	Polyethylene DPC with Mineral Wool insulation	1.2m	10	

Insulation

Material	British Standard	Thermal Conductivity (K Value Ψ 90/90)	Fire Resistance	ODP
Expanded Polystyrene	BS 3837-1:1986	0.038	n/a	CFC & HCFC Free
Polyethylene Foam	BS 5628-3:1983	0.04	n/a	CFC & HCFC Free
Mineral Wool	BS 476-4:1970	0.35	60 mins	CFC & HCFC Free
Polyethylene	BS 6515:1984			

Health & Safety

Dacatie has an approved Health and Safety Policy and is committed to working and supplying products safely. A Dacatie COSHH data sheet is available and can be downloaded from the Dacatie website www.dacatie.co.uk.

Environment

Dacatie's closer insulation has no CFC's, HCFC's in the manufacturing process and represents no known threat to the environment. Dacatie's closer insulation has a low impact on the environment and is classified as zero ODP and zero GWP.

Storage & Packaging

Dacatie's closers are supplied in polythene sleeves that are designed for transporting and protecting the products. It is not recommended that the packs are stored in direct sunlight. When storing the Cavity Closers for longer periods of time it is recommended the product should be stored indoors, or under cover.

GWP levels less than 5, ODP Zero and Green Guide A+

Dacatie Insulated Cavity Closers offer different insulation materials with the option of GWP levels of <5, ODP levels of zero and Green Guide ratings of A+

BREEAM (and Code for Sustainable Homes)

BRE has advised that Insulated Cavity Closers as a product do not gain Green Guide credits, since they do not enhance BREEAM scheme categories.

BREEAM®

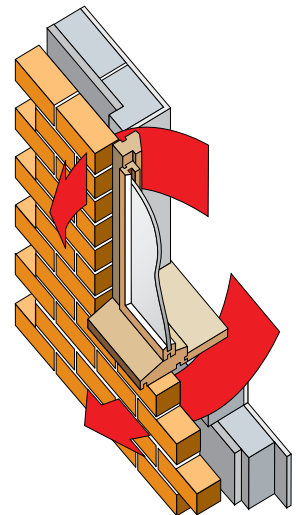
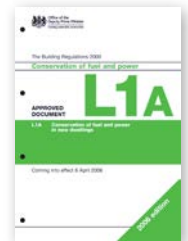
Building Regulations compliance

Building Regulation (Part L) compliance is important. The path of minimum thermal resistance through the closer must be at least 0.45 m²K/W, which Dacatie closers achieve.

Cold Bridging

The problems of cold bridging are recognised in the Part L Building Regulation 2010 and Scottish Building Regulations 2004. Dacatie Insulated Cavity Closers are used to overcome thermal loss that occurs around unprotected cavities and reveals. Thermal loss can result in problems of condensation, staining and mould growth at the reveals of these openings.

Prolonged exposure to such factors will lead to a deterioration of the internal plaster and paint work. The use of Dacatie Cavity Closers will help to prevent the occurrence of such factors.



Specification Statement

The insulated cavity closer around window and door openings is to be a Dacatie product, supplied by Quantum Profile Systems Ltd, Salmon Fields, Royton, Oldham, OL2 6JG and installed in accordance with the manufacturer's recommendations.